



NORDIC PLATFORM

- supporting a better world

THE NEXT GENERATION OF SCAFFOLDING PLATFORMS

**PRODUCT
CATALOGUE**

 **AIRSTEPS**[®]

AIRSTEPS[®]
[O] [C] [E] [A] [I] [N]

CONTENTS

ABOUT NORDIC PLATFORM	3
ALL OVER THE WORLD	4
AIRSTEPS COMPOSITE	6
THE MATERIAL OF THE FUTURE	7
PRODUCTION METHOD	8
DEVELOPMENT PROCESS	9
FOR ALL SCAFFOLDING SYSTEMS	10
DESIGN YOUR OWN DECK	11
WOOD REPLACEMENT BOARD	12
HA	13
CUPLOCK	14
SL	15
COMBI	16
COMBI FULL DECK	17
RL	18
RLF - FULL DECK	19
TRALLE	20
LA BANK / FIXED TRALL & OC	21
SPECIAL SOLUTIONS / EVENT	22
TOE BOARD	23
ANCHOR	24
TOEBOARD CLIP, SUPPORT PLATE	27
FALL PROTECTION, MOVING RAMP	28
SAFETY CLIP, SAFETY CAP, TRALLE LOCK, SPACEFILLER	29
ESG	30
ENVIRONMENTAL CONDITIONS	31



ABOUT NORDIC PLATFORM

 www.nordicplatform.com

 Nordic Platform A/S

Since its establishment in 2012 Nordic Platforms main purpose has been to develop scaffolding platforms which simplifies the users work everyday while also supporting a safe working environment. Having this as our goal we initiated a collaboration with the leading experts within the field of composite and developed AIRSTEPS Composite decks.

Prior to the launch was three years of research and development. This was necessary to achieve the high standards and requirements. In 2012 the first AIRSTEPS left the production facility and today we have customers all around the world.


NORDIC PLATFORM
- supporting a better world

 **AIRSTEPS®**

AIRSTEPS®
[O] [I] [C] [E] [I] [A] [I] [N]

ALL OVER THE WORLD



One of our core competences quickly turned out to be the fact that our market offering had an instant appeal to fellow industry pioneers all over the world. Container by container we slowly but surely spread the awareness of the benefits of our composite decks and the products subsequently stood the test of time and all sorts of weather and climate conditions as well as usage situations.

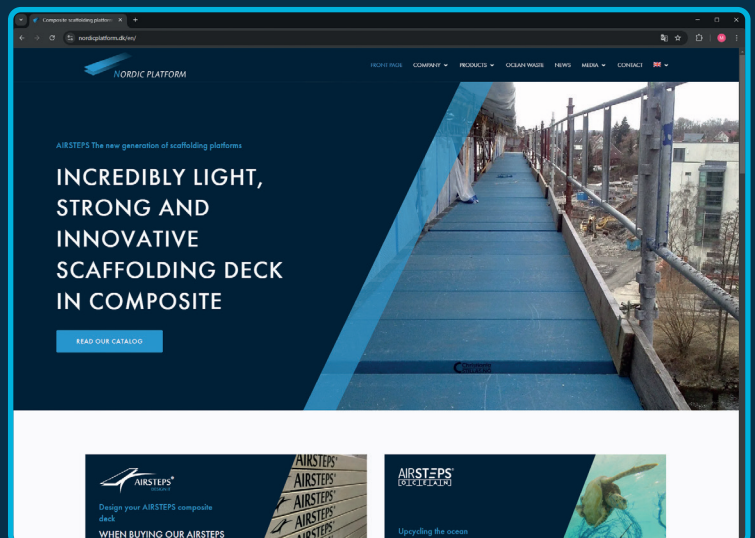
● Production

● Distributors

Today, we are consequently confident in stating that our composite decks have passed the test of everyday usage.

**SEE OUR LIST OF PARTNERS
AND LEARN MORE ABOUT US
VISIT OUR WEBSITE**

WWW.NORDICPLATFORM.COM





AIRSTEPS COMPOSITE



The innovative and robust AIRSTEPS composite deck does not take in moisture or expand. The product is resistant towards standard chemicals and preserves its unique qualities at high and low temperatures. All this contributes to a long product lifetime. In case of disposal of the product an environmentally friendly recycling takes place. AIRSTEPS has completed a long line of tests and fulfils all demands and standards.

All tests confirms the composites unique qualities both based on the technical characteristics as well as from the construction sites where they are frequently used. The AIRSTEPS deck is equipped with an anti-slip surface which is extremely slip resistant.

The low weight of AIRSTEPS also leads to several economical advantages. You can have more platforms in your truck - as well as the actual erection and dismantling of the scaffolding is faster as the platforms are easier to handle.

The AIRSTEPS deck does not react to cold weather as aluminium and steel does which makes it even more popular by users in the wintertime. This characteristic is especially popular in Scandinavia. AIRSTEPS are available in scaffold class 5 & 6 according to DIN EN 12811. AIRSTEPS meets all the safety standards and is patent protected.

THE NEW AND IMPROVED ALTERNATIVE TO
WOOD, STEEL AND ALUMINUM



THE MATERIAL OF THE FUTURE



STRONG MATERIAL WITH HIGH RESISTANCE TOWARDS HEAT, FIRE, CHEMICALS AND WEATHER.

Thanks to its robustness composite is extremely suitable for heavy loads. In addition to being solid and robust it is also an ergonomically correct scaffolding deck with high load tolerances.



High strength

Flexible

Light weight

All lengths and widths

All scaffold classes (1-6)

Safety factor 3

Fire resistant UL94V-0 & IMO 2010

Not conductive

Acid and alkali resistant

UV resistant

Water resistant

Temperature between -30°C and +70°C

Anti-slip surface

Easy to clean

Recyclable

Long product lifetime

Can be produced in any colour

Can be customized with your own logo

Slip resistance - R13 acc. DIN EN 16165-B

Pendulum test - D73 W78 acc. DIN EN 16165-C

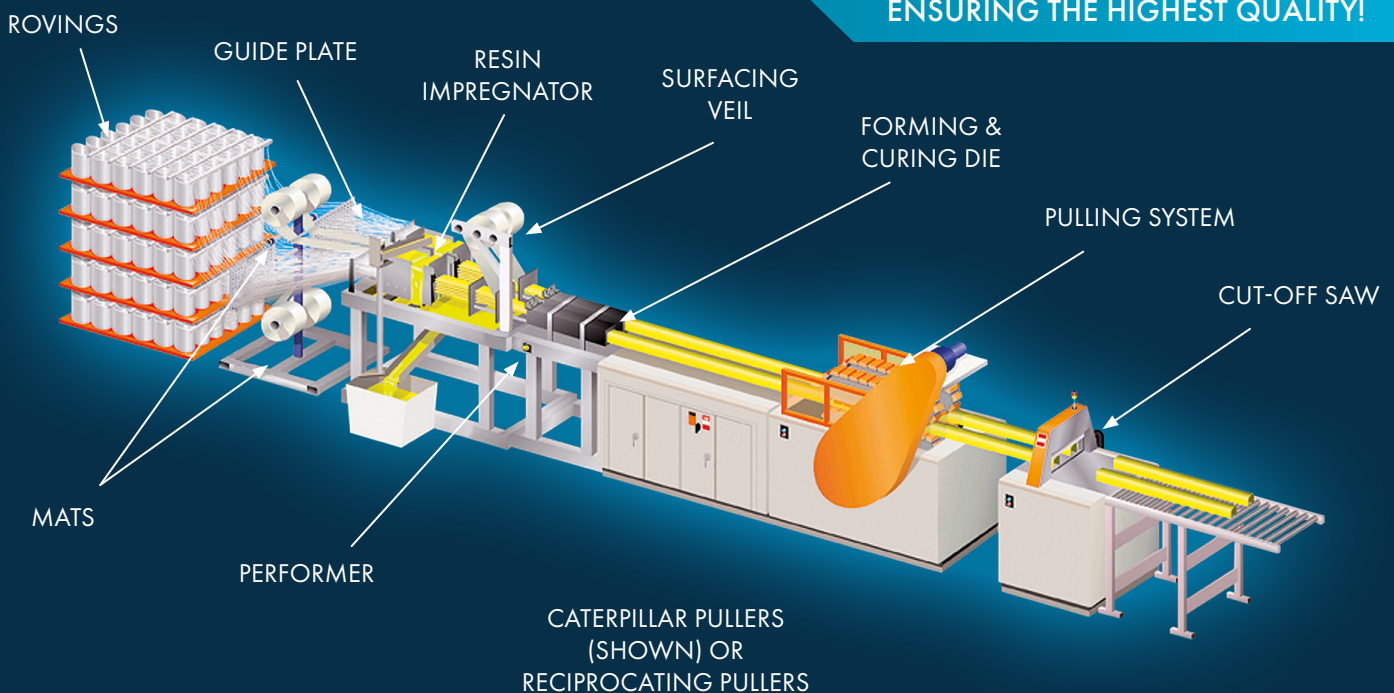
Tribometer test - 0,63 µGMG acc. DIN EN 16165-D

PRODUCTION METHOD

AIRSTEPS - PULTRUDED COMPOSITE DECKS

AIRSTEPS is produced by pultrusion („extrusion process“). Pultrusion is a method for the production of fiber reinforced polymer profiles in a continuous stream of uniform high quality. Our engineers have continuously optimised the production method and have now reached the required strength, durability, weight and design.

EFFECTIVE PRODUCTION PROCESS
ENSURING THE HIGHEST QUALITY!



Source: creativepultrusion.com

MATERIAL PROPERTIES

THERMAL AGING

2000 hours at 80°C.

UV AGING

ISO 4892-2: 2006 method A

Tested with a water-cooled Arc Xenon Lamp with two Borosilicate filters. Black standard temperature at 65°C and the air temperature at 38°C. The light intensity is controlled at 340nm over 0,5 l W/m² nm.

The test is performed for 2000 hours.

2000 hours equals approximately 2 years of sunlight in Scandinavia.

ALKALI & HCl AGING

The material is resistant towards alkali products such as plaster and mortar. The product is tested in a 50°C warm, saturated CaOH₂ solution for 500 hours. HCl: The product is submerged in 20% HCl solution at 50°C in 500 hours.

DEVELOPMENT PROCESS

WE DEVELOP AND PRODUCE PRODUCTS ACCORDING TO YOUR WISHES

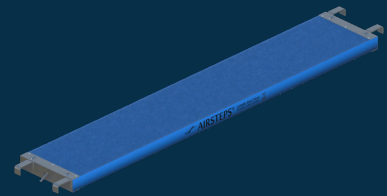
MEETING



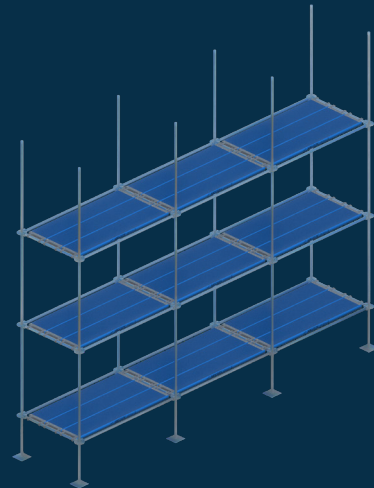
CUSTOMER



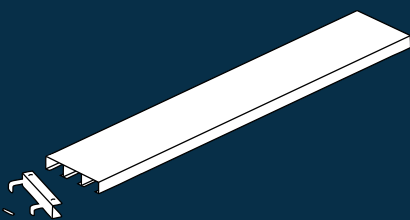
NORDIC
PLATFORM



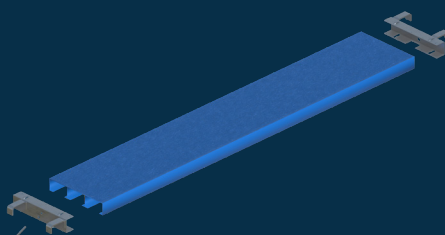
PLAN



PRODUCTION



TECHNICAL DRAWING

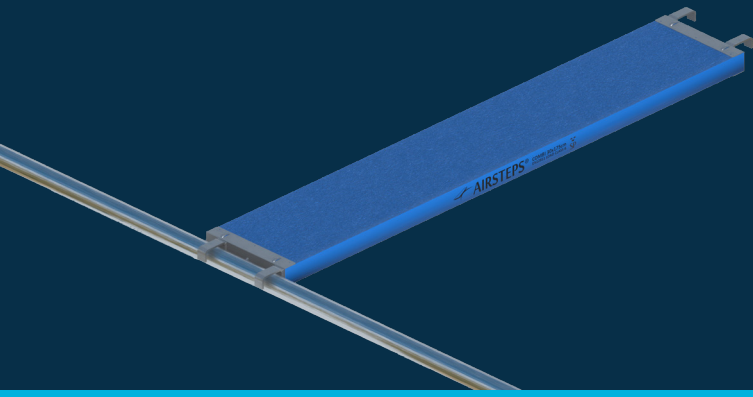


PRODUCTION

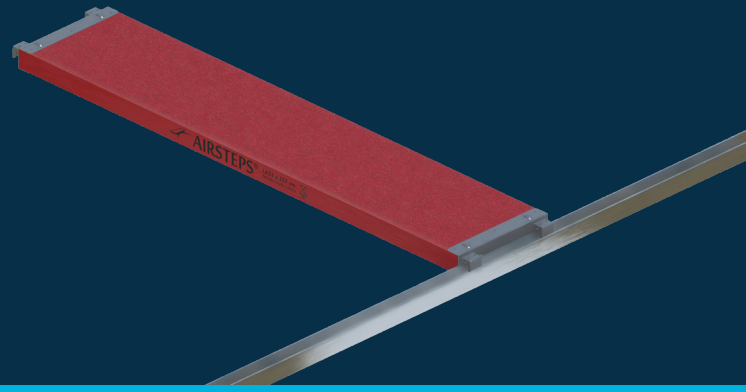


FINAL PRODUCT

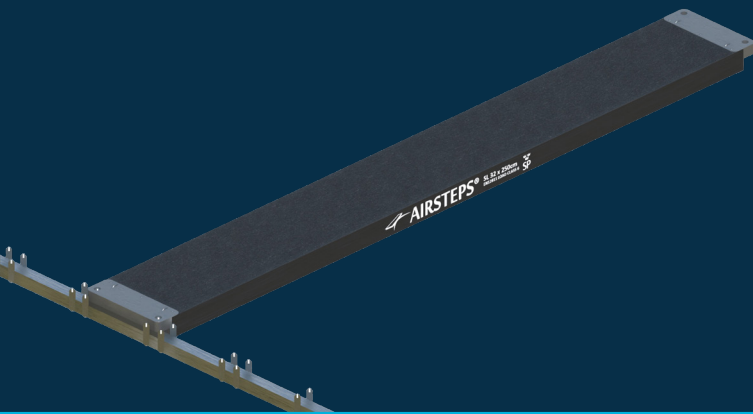
FOR ALL SCAFFOLDING SYSTEMS



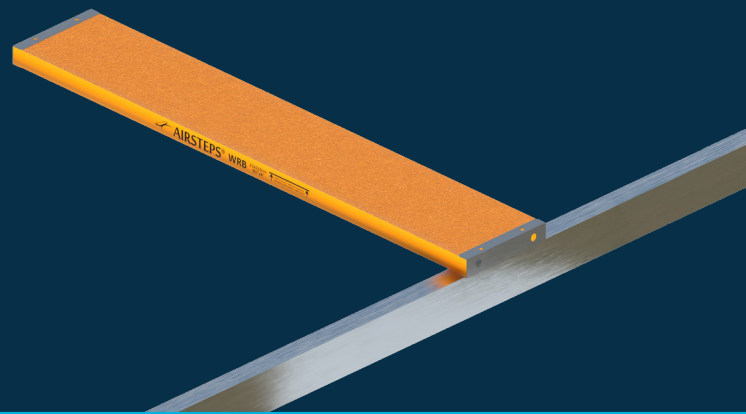
O-PROFILE



U-PROFILE

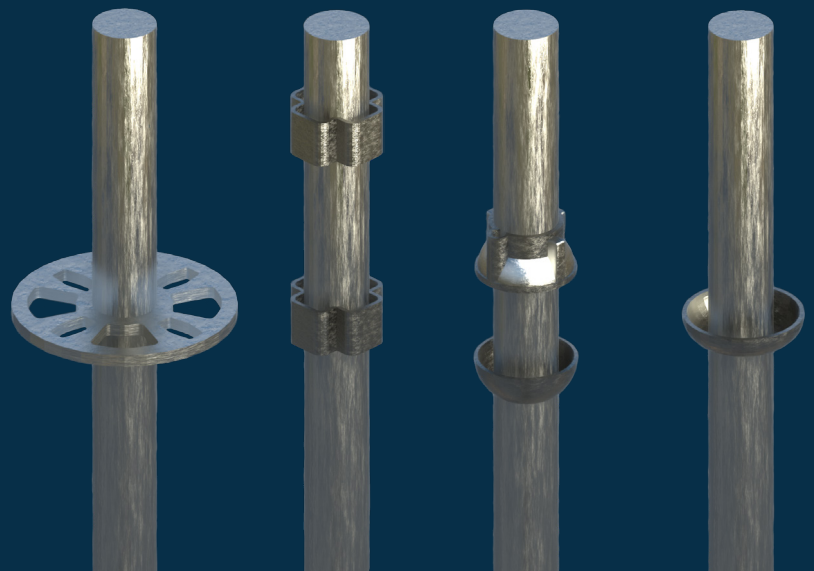


SL-PROFILE



+ MORE

AIRSTEPS decks are available for all scaffolding systems and comply with the highest safety regulations. AIRSTEPS can be tailored to your specific system and the way you build it. All wanted lengths and widths have an anti-slip surface ensuring great grip. Our end pieces are made from composite, aluminium or steel and fits all standard scaffolding systems.





MAKE YOUR BRAND STAND OUT!

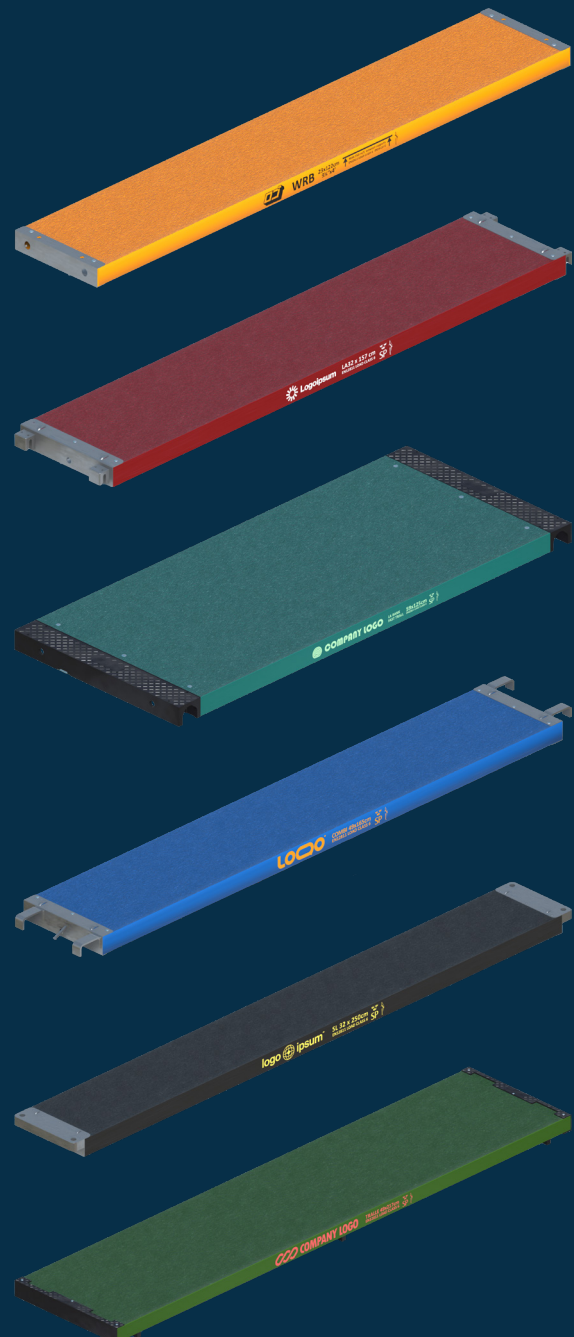
DESIGN YOUR OWN DECK

AIRSTEPS can be produced in all colours and customized with your own logo. This gives a unique branding opportunity for every company because the visibility is high throughout the products lifetime. On top of that the risk of products being stolen is significantly lower with logo decks.

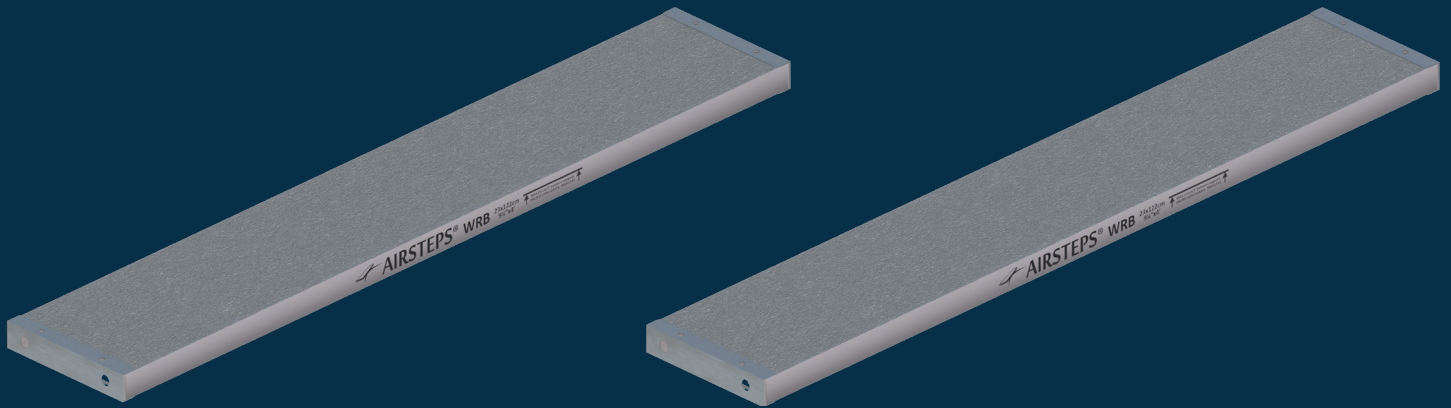
**YOUR OWN
COLOUR AND
LOGO**

**UNIQUE BRANDING
OPPORTUNITY**

**MINIMIZED RISK
OF THEFT**



WOOD REPLACEMENT BOARD



In many markets wooden boards are being replaced by other materials, especially in environments with high hygiene, sterility and cleaning requirements.

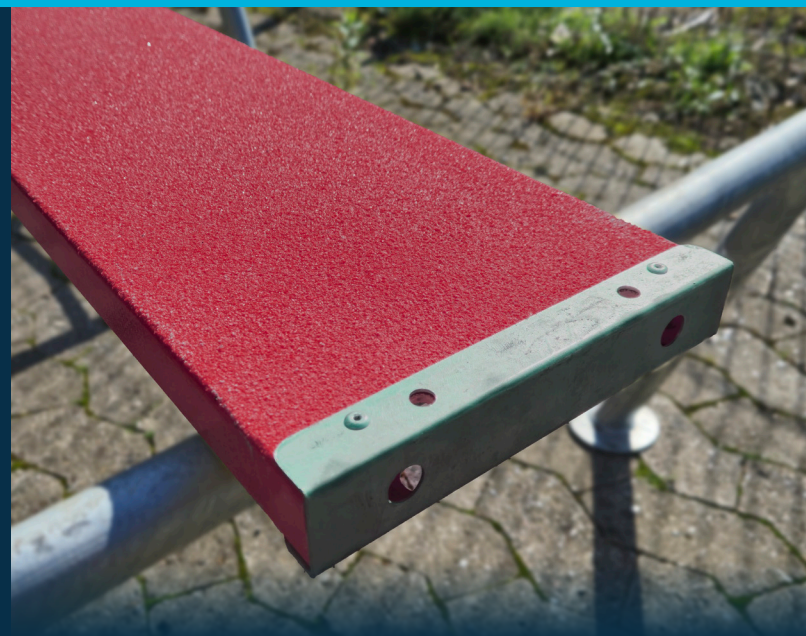
Length		Width		Wood Weight		Composite Weight		Weight Reduction
Ft.	Cm.	Ft.	Cm.	Lbs.	Kg	Lbs.	Kg	%
4	122	9 ¼	23	15.0	6.8	8.6	3.9	43%
6	183	9 ¼	23	22.5	10.2	11.5	5.2	49%
8	244	9 ¼	23	30.0	13.6	14.3	6.5	52%
9	274	9 ¼	23	33.8	15.2	15.6	7.1	53%
10	305	9 ¼	23	37.5	17.0	17	7.7	55%
12	366	9 ¼	23	45.0	20.4	19.8	9	56%
16	488	9 ¼	23	60.0	27.2	25.4	11.5	58%

LOAD TEST

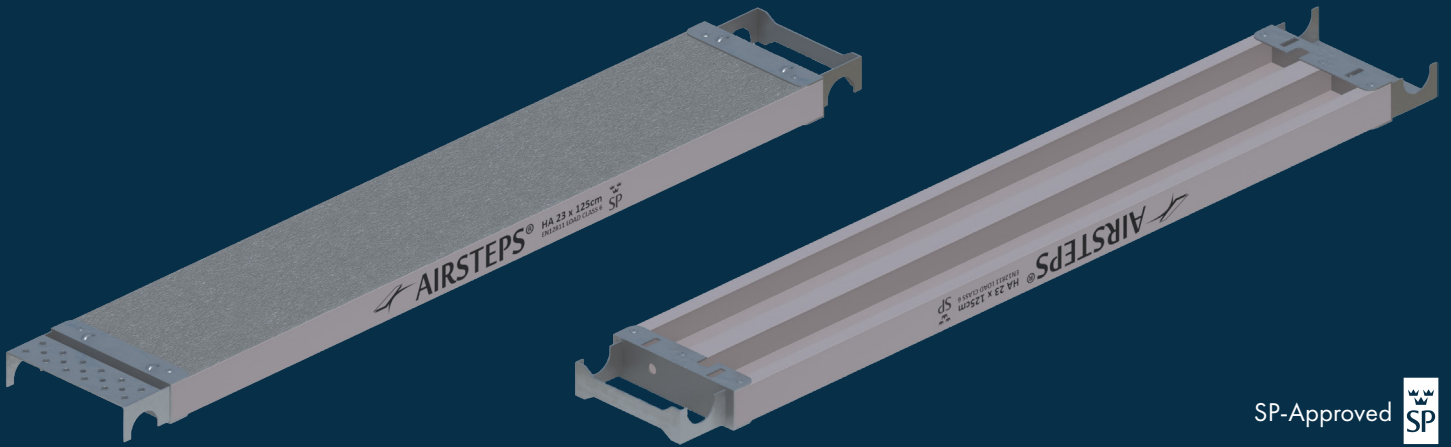


SPECIFICATIONS

- Lighter as wood 43-58%
- Long-term profitability due to extended durability to wood
- Platform height: 3.7cm
- Easy handling on site
- Customized sizes on request
- Your colour and logo



HA

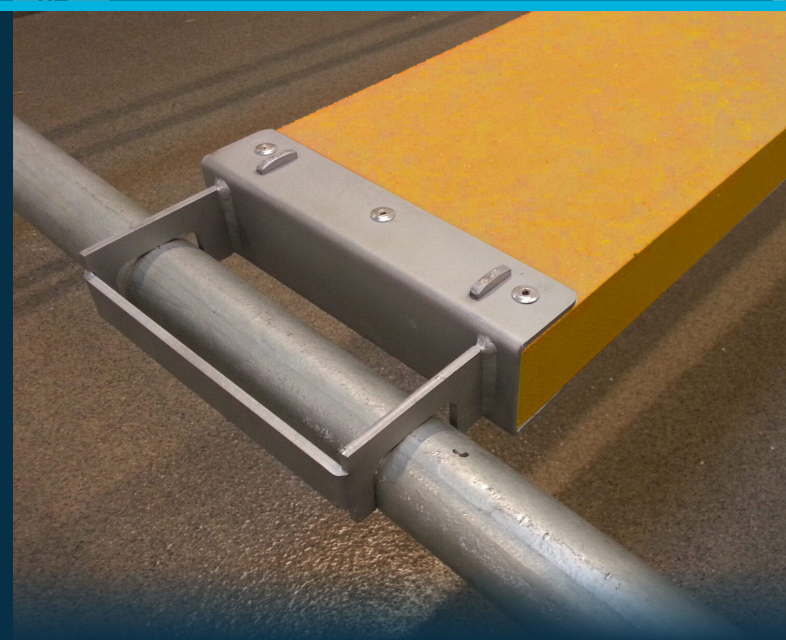
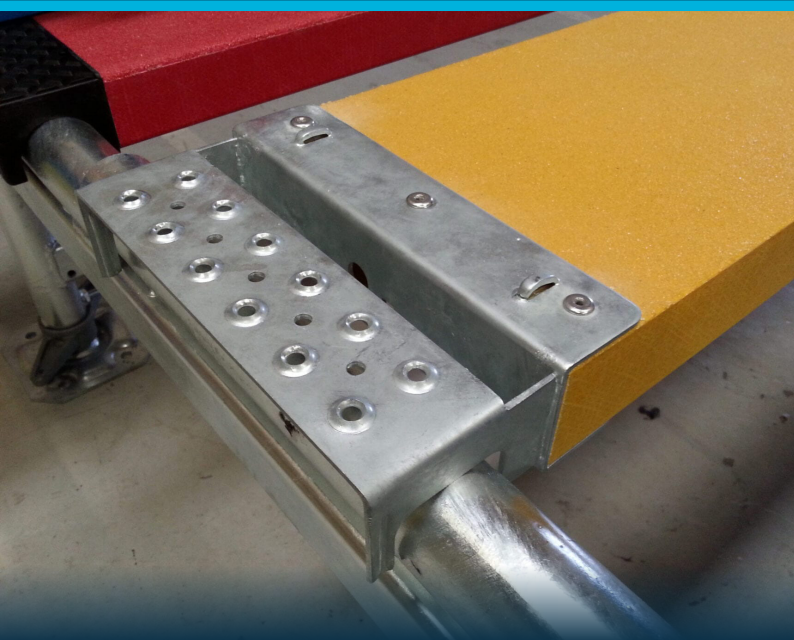
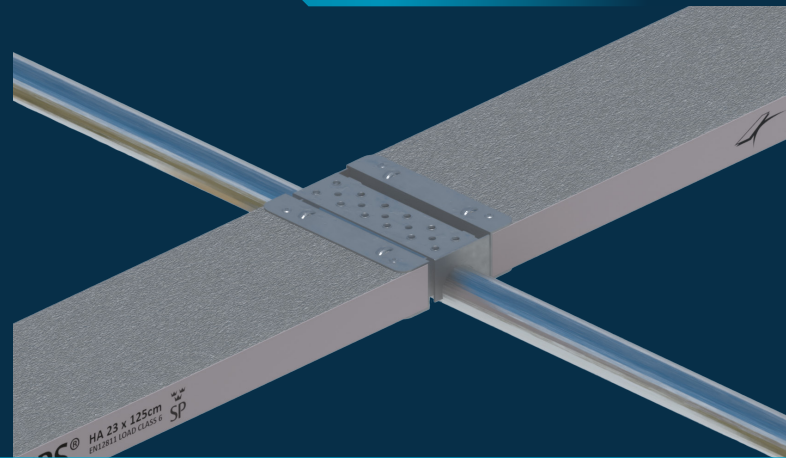


SP-Approved 

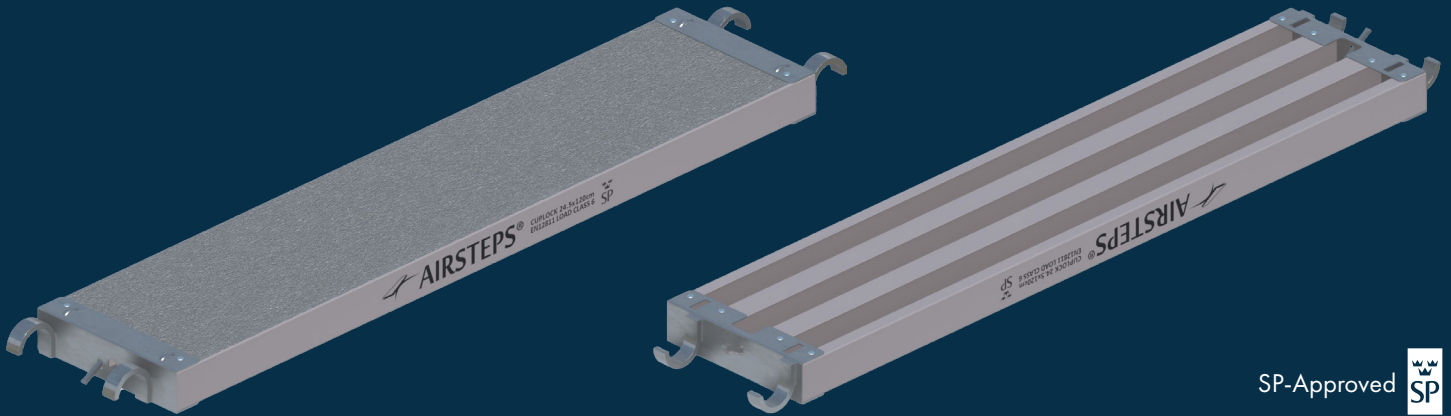
Measurement (cm)	Approx. weight (kg)	Scaffold class
23 x 305	12.6	5
23 x 250	10.7	6
23 x 205	7.4	6
23 x 196,4	7.2	6
23 x 165,5	6.3	6
23 x 125	5.2	6
23 x 105	4.7	6
23 x 77	3.9	6

AIRSTEPS HA-deck is made with end pieces that can be connected with no gaps. This minimizes the risk of tripping and other accidents.

NO GAPS BETWEEN



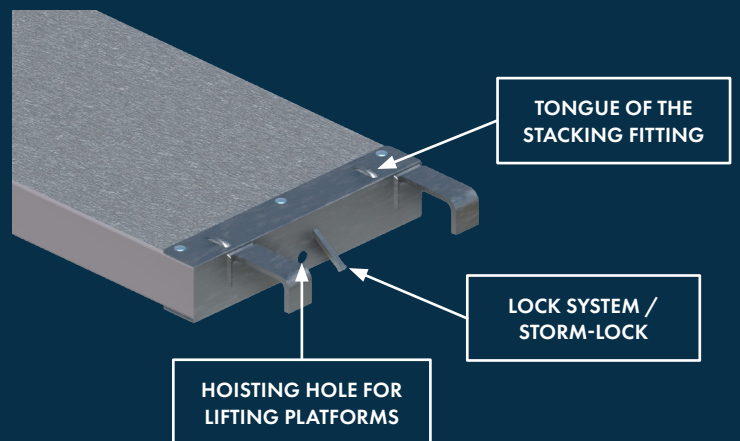
CUPLOCK



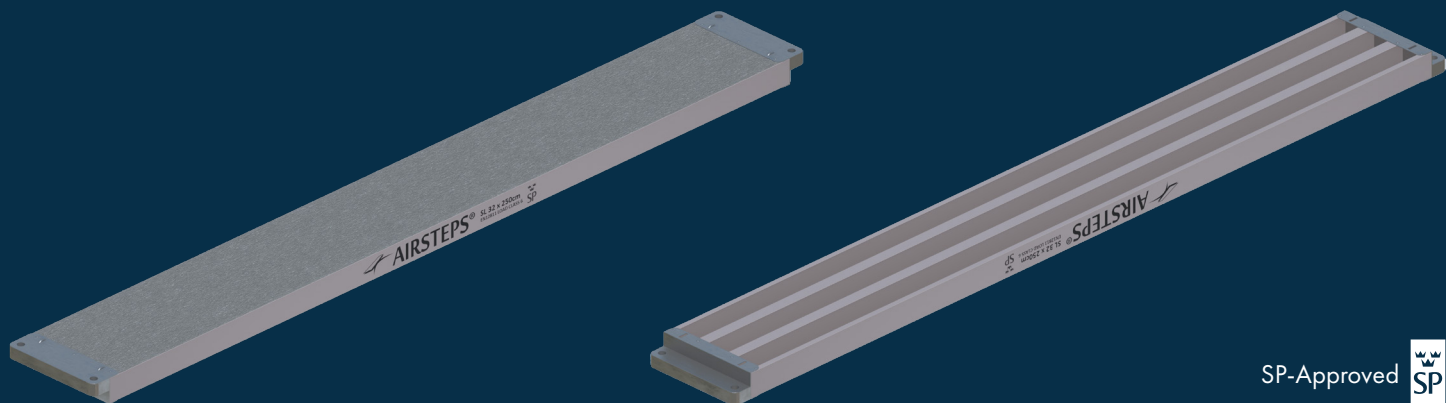
SP-Approved 

Measurement (cm)	Approx. weight (kg)	Scaffold class
24.5 x 300	14.7	5
24.5 x 250	12.6	6
24.5 x 200	8.6	6
24.5 x 180	7.9	6
24.5 x 160	7.2	6
24.5 x 130	6.1	6
24.5 x 120	5.8	6
24.5 x 90	4.7	6
24.5 x 65	3.8	6
24.5 x 45	3.1	6

The AIRSTEPS Cuplock is rated for high duty scaffold use with load class 6 up to 250cm length. The hooks are offset to allow continuous decking. Can be produced with OCD and HA hooks.



SL

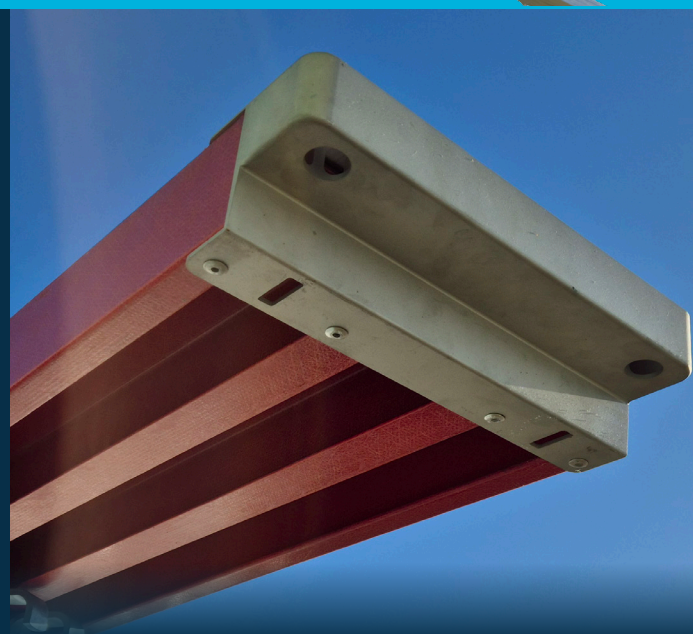
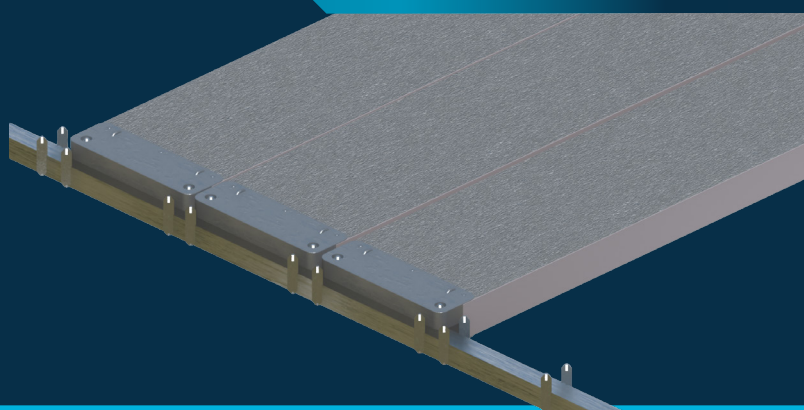


SP-Approved 

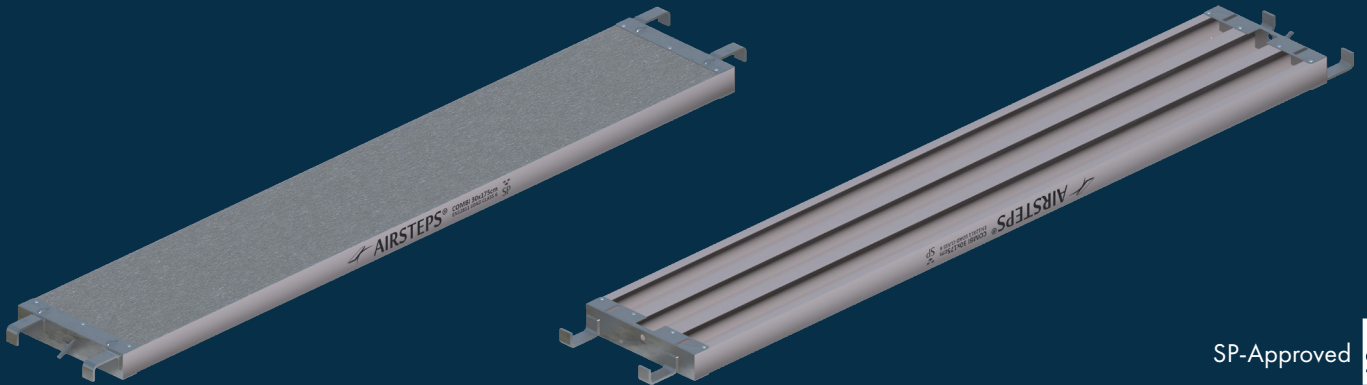
AIRSTEPS SL-deck with steel ends fulfils all load demands and is a class 5 or 6 in accordance with DIN EN 12811. Nordic Platform offers SL-decks in all dimensions and with a non-slip surface. The SL-deck can be produced in all colours and be customized with your own logo.

Measurement (cm)	Approx. weight (kg)	Scaffold class
32 x 307	15,8	5
32 x 257	12,2	6
32 x 207	10	6
32 x 157	8	6
32 x 109	6	6
32 x 73	5	6

SL-PLETTAC COMPATIBLE



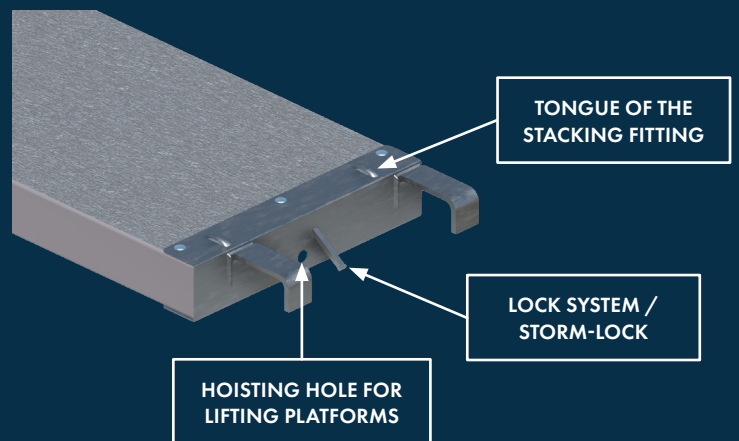
COMBI



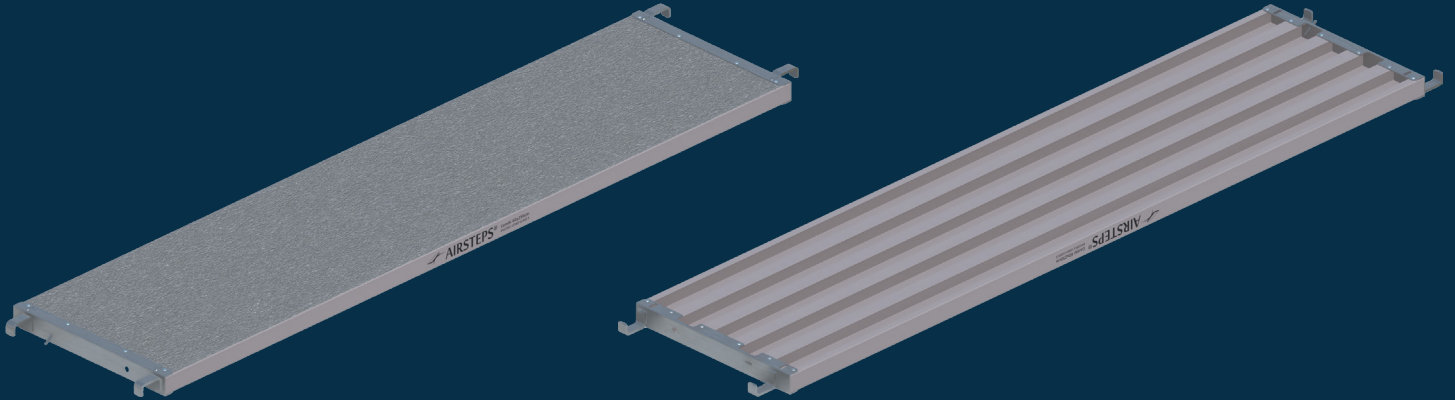
SP-Approved 

Measurement (cm)	Approx. weight (kg)	Scaffold class
30 x 305	14,8	5
30 x 300	14,6	5
30 x 250	12,2	6
30 x 225	11,4	6
30 x 200	10,5	6
30 x 175	9,4	6
30 x 150	8,6	6
30 x 125	7,2	6
30 x 100	6,4	6
30 x 70	6	6

AIRSTEPS Combi-deck with steel ends. Incredibly robust, comes with a hoisting hole and it is stackable. Our Combi-decks are scaffold class 5 or 6. The Combi-deck is compatible with (among others) the cuplock system. It is easy to install and uninstall the hooks. The combi deck is available in all dimensions.

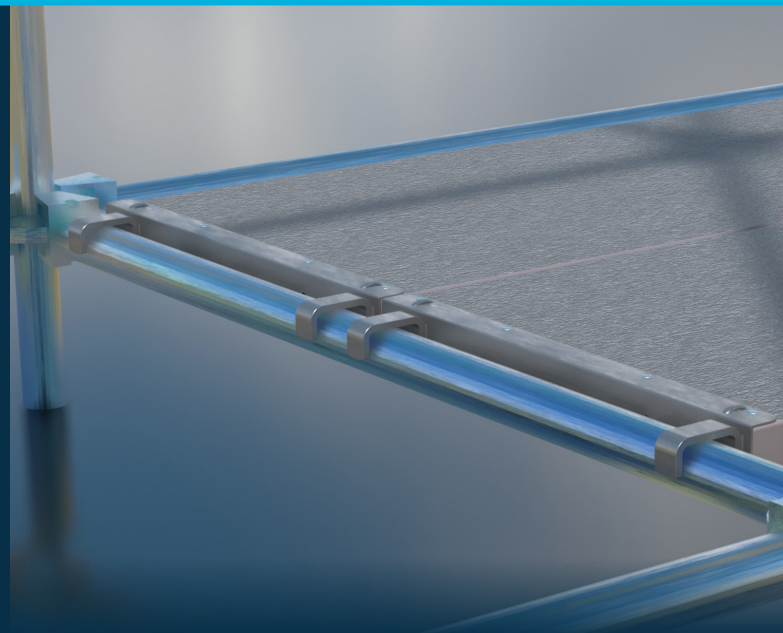
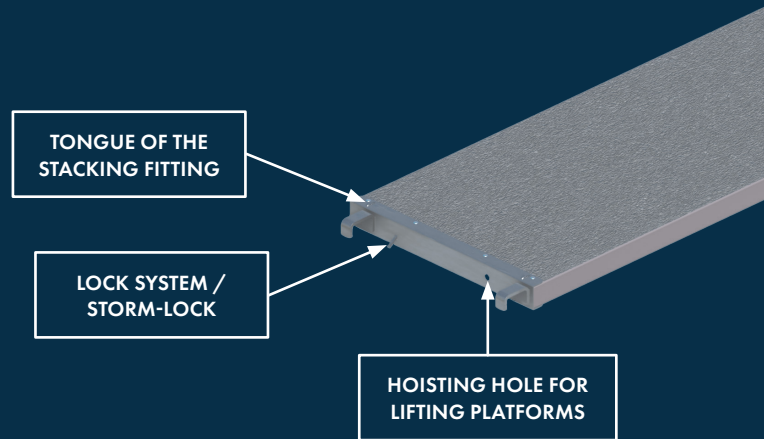


COMBI FULL DECK

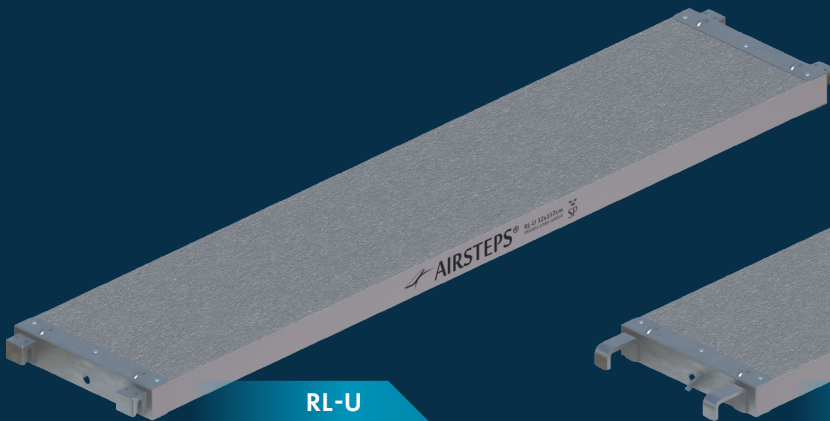


AIRSTEPS Combi 59x250cm featuring steel ends. The AIRSTEPS Combi can be customized with anti-tilt and a double storm-lock. The platform has a height of 5.6cm.

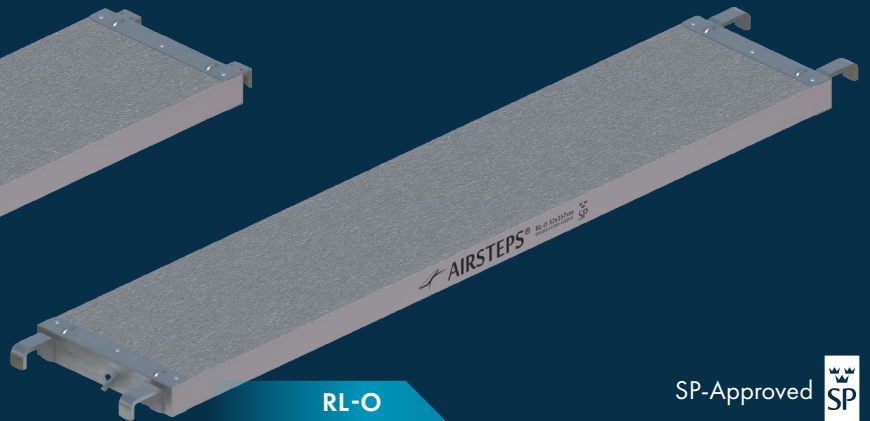
Measurement (cm)	Approx. weight (kg)	Scaffold class
59 x 250	18.9	5
59 x 200	16.5	5
59 x 175	14.9	5
59 x 165	14.3	5
59 x 150	13.3	5
59 x 125	11.7	6
59 x 100	10.1	6



RL



RL-U



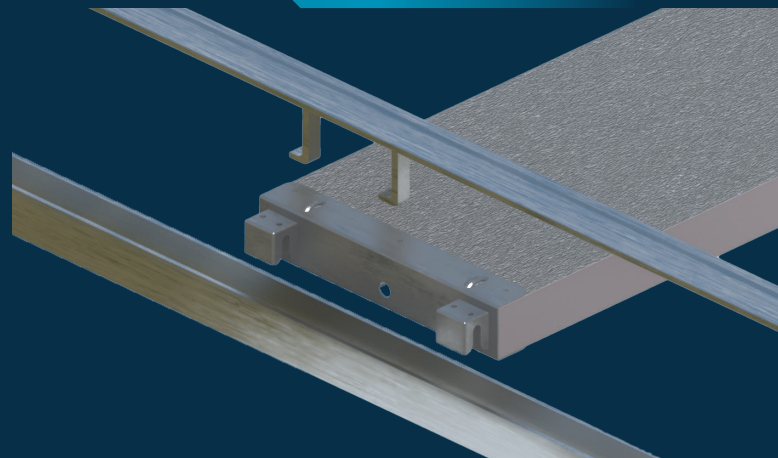
RL-O

SP-Approved 

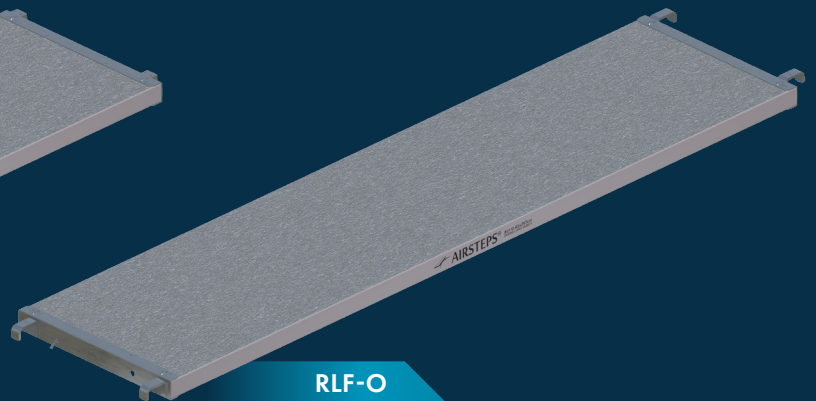
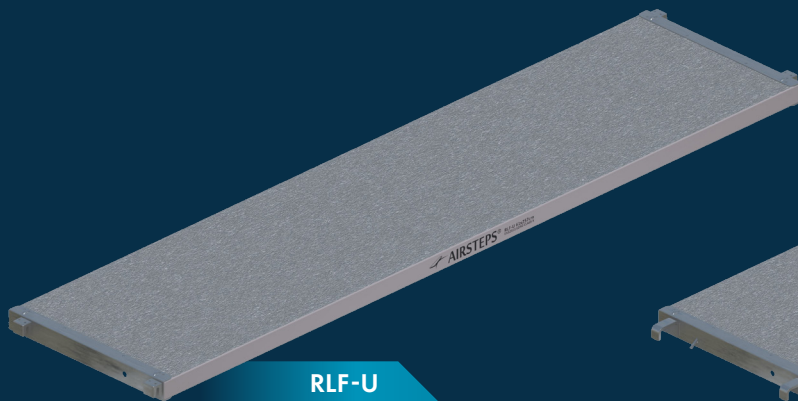
AIRSTEPS RL-deck fulfils all load requirements. The steel ends are stackable. Our decks are scaffold class 5 & 6 in accordance with DIN EN 12811. Nordic Platform offers the RL-deck in all dimensions and with a non-slip surface.

Measurement (cm)	Approx. weight (kg)	Scaffold class
32 x 307	15,8	5
32 x 257	12,2	6
32 x 207	10	6
32 x 157	8	6
32 x 140	7,7	6
32 x 109	6	6
32 x 73	5	6

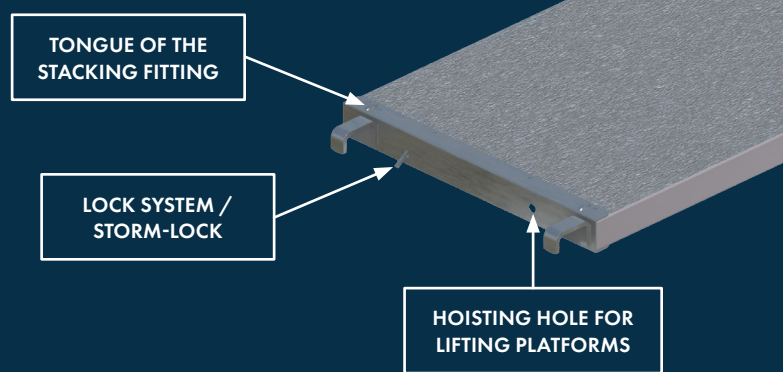
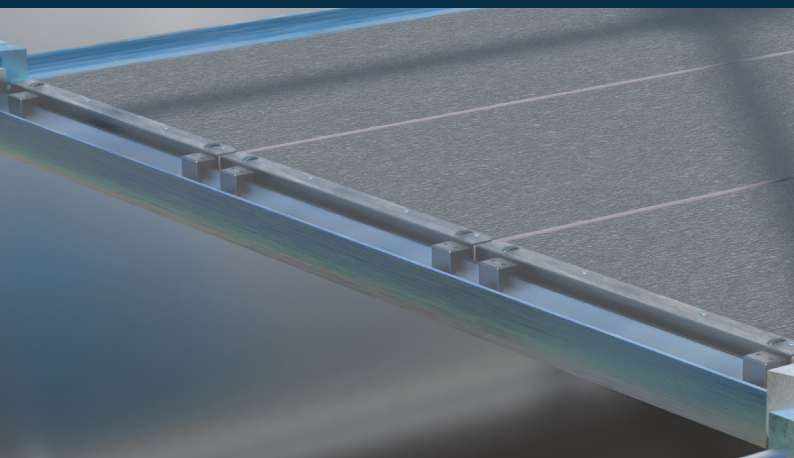
RL-U FOR U-PROFILE



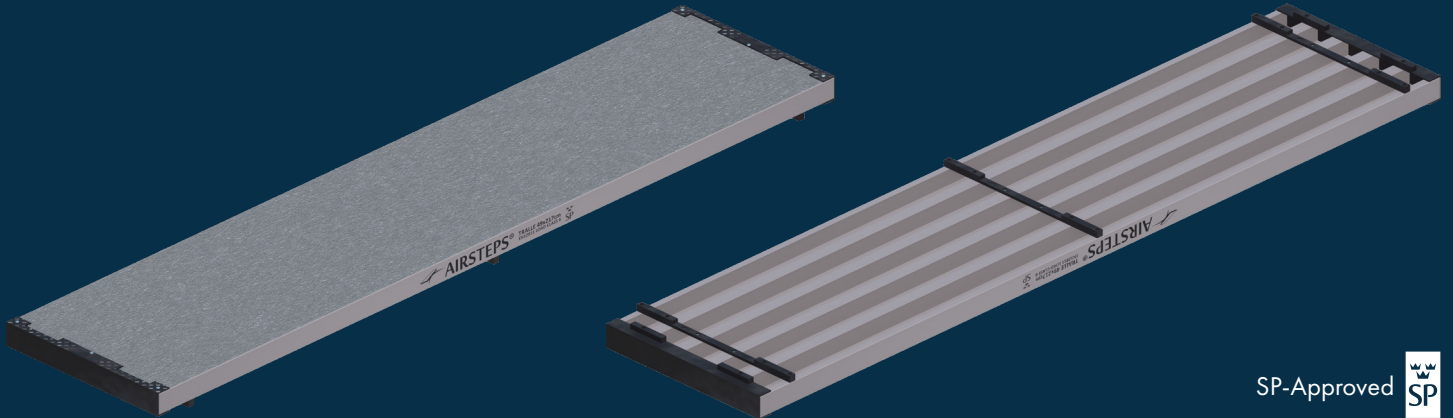
RLF - FULL DECK



AIRSTEPS RLF 61x257cm featuring steel ends. Can be produced with O- and U-Profile. The platform has a height of 5.6cm. AIRSTEPS Combi can be customized with your choice of colour and logo to align with your brand.



TRALLE

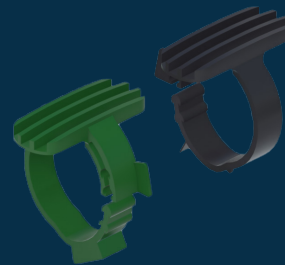


SP-Approved 

Measurement (cm)	Approx. weight (kg)	Scaffold class
59 x 240	15,9	6
59 x 217	14,5	6
59 x 195	13,5	6
59 x 140	9,6	6
49 x 240	13,5	6
49 x 217	12,5	6
49 x 195	11,5	6
49 x 140	8	6

AIRSTEPS Tralle is a composite deck originally developed for the Danish and Swedish market. It is the lightest deck on the market, stackable and easy to handle. AIRSTEPS Tralle can be produced in all colours and customized with your own logo. Scaffold class 6.

SCAFFOLDING ACCESSORIES  **TRALLE LOCK**

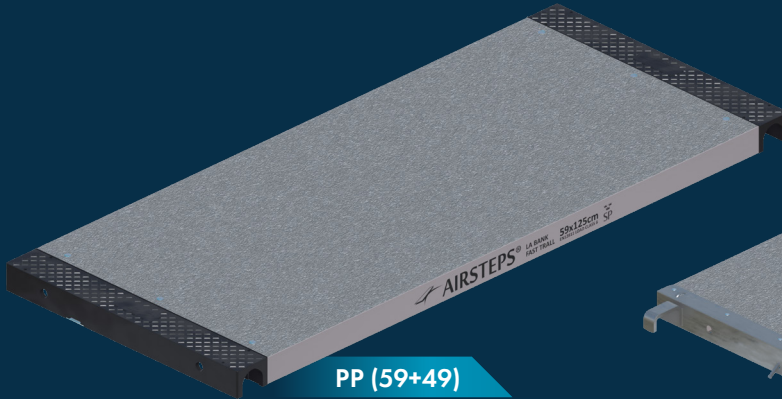


The lock is used to secure the unattached decks. It fastens the deck to ensure increased safety. The product also secures the decks in high winds.

Available in ocean plastic and steel.



LA BANK / FIXED TRALL & OC



PP (59+49)



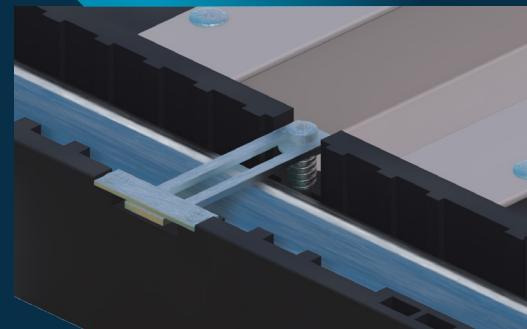
STEEL (ALL)



Measurement (cm)	Approx. weight (kg) steel ends	Approx. weight (kg) pp ends	Scaffold class
59 x 200	16.5	14.7	5
59 x 175	14.5	13.4	6
59 x 165	13.9	12.8	6
59 x 150	12.9	11.8	6
59 x 125	11,3	10.2	6
59 x 100	9.7	8.6	6
49 x 165	11.4	10.4	6
49 x 125	9	8	6
48.5 x 175	13.8	-	6
48.5 x 150	12.5	-	6
48.5 x 125	11.2	-	6

AIRSTEPS La Bank / Fixed Trall with PP or steel ends was originally developed for the Norwegian market but is gaining market acceptance in both Denmark and Sweden due to the low weight and universal design. 48.5 is the OC (Shown top-right)

EASY-TO-USE STORMLOCK



SPECIAL SOLUTIONS / EVENT

NORDIC PLATFORM
- supporting a better world

Nordic Platform produces scaffolding decks for many purposes other than scaffolding. AIRSTEPS decks are used for e.g. grandstands, walkways and stairs. We can make platforms for your specific needs – in all lengths and widths (e.g. 40 cm or 46 cm widths). The decks can be produced in any colour and customized with your own logo.



TOE BOARD

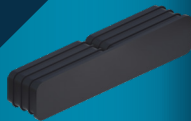


1,87 KG / M

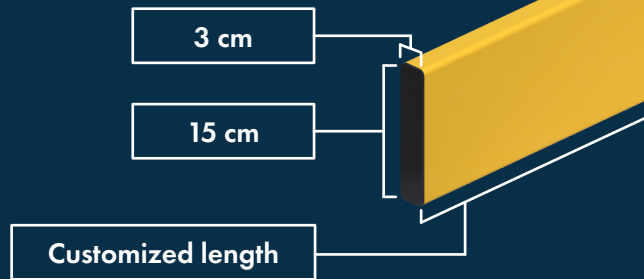
PRODUCED IN COMPOSITE



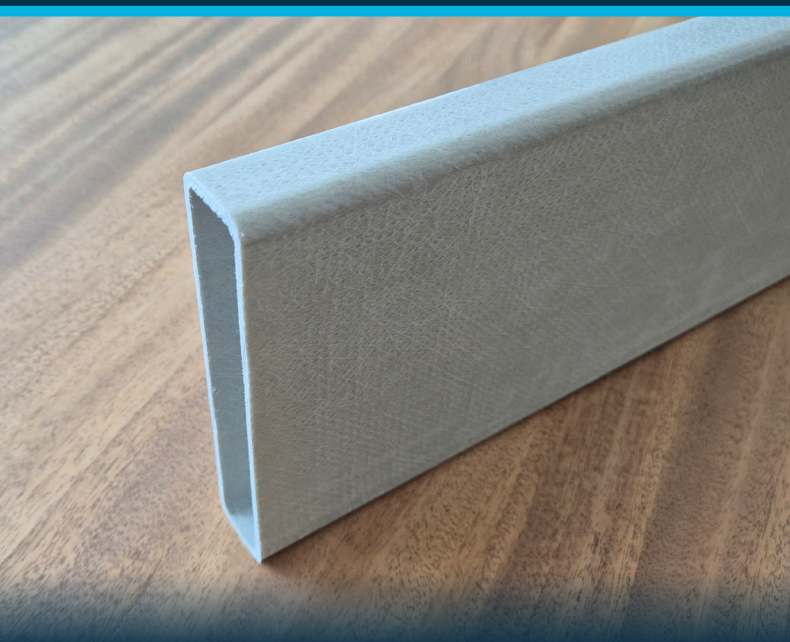
WITH OR WITHOUT END CAPS



APPROVED ACCORDING TO EN 12811-1

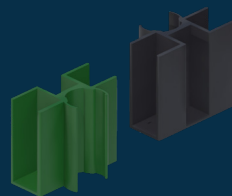


With end pieces for all systems
Customized colour and logo
(Standard: grey, without end caps & logo)



SCAFFOLDING ACCESSORIES **AIRSTEPS**
[O I C L E I A I N]

TOE CLIP



The Toe Clip is produced by min. 92% strong ocean plastic. The rest comes from chalk and coloring. Toe Clip is mounted on the scaffolding frame. Toe Board can be easily inserted into the clips.

ANCHOR



INCREASED SAFETY ON THE CONSTRUCTION SITE

According to DIN 4420 free-standing scaffolding must be anchored vertically and parallel to the façade. The scaffolding anchor removes the risk of the scaffolding being pulled away or pushed against the building. The anchor is installed during the stepwise erection of the scaffold. The anchor can be produced in any possible colour while red, orange, yellow, green and blue are standard colours. The colour will stand out meaning that you can easily see if all anchors are correctly placed from a distance and it will also minimize head injuries. If you want to modify the length of the anchor this can easily be done with a hand saw.

PULL AND PRESSURE FORCE OF MIN. 1.000 KG.

WITH STEEL HOOK

Length (cm)	Approx. weight (kg)
40	0,7
50	0,8
70	1,0
80	1,1
100	1,2
120	1,4

WITH LOGO (ORDER QUANTITY MIN. 500 PCS.)

SCAFFOLD TUBE - Ø48,3MM





AIRSTEPS®
[O | C | E | A | N]

SCAFFOLDING ACCESSORIES MADE OF OCEAN PLASTIC

Nordic Platform produces scaffolding accessories made from recyclable materials removed from the ocean; making an important contribution to environmental safety. The majority of our scaffolding accessories are now mainly produced in ocean plastic without compromising the quality and strength of the products.

By purchasing these products you will help us make a difference by removing plastic, fishing nets, etc. from the ocean and re-manufacturing it into new products. Helping both humans and the oceanic animals towards minimizing the intake of micro-plastic and moving toward clean oceans – benefiting all on this earth.



NORDIC PLATFORM

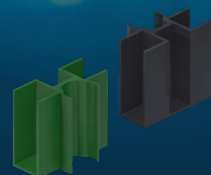
- supporting a better world

AIRSTEPS®

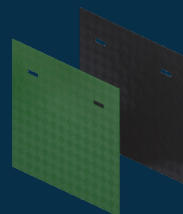
O | C | E | A | I | N



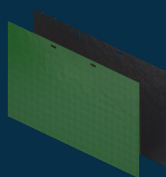
SUPPORT PLATE



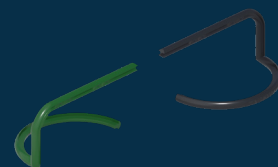
TOEBOARD CLIP



FALL PROTECTION



MOVING RAMP



SAFETY CLIP



SAFETY CAP



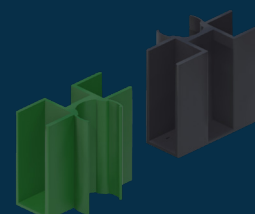
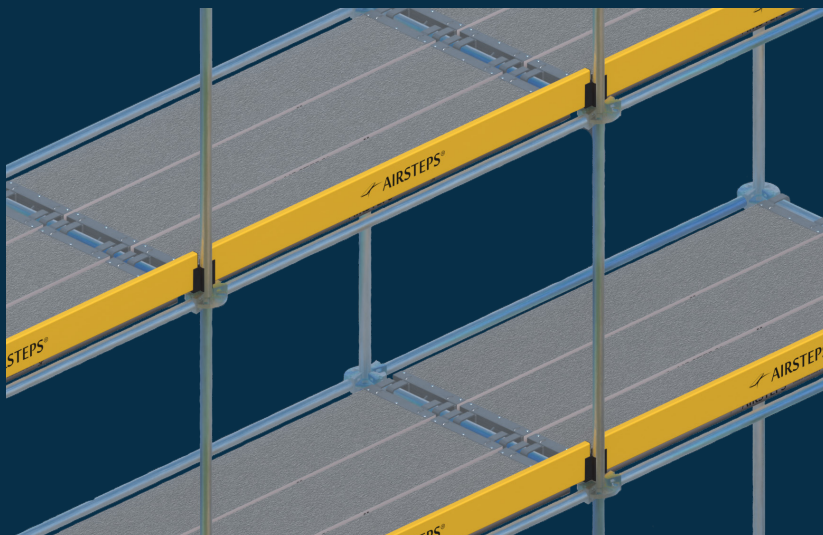
TRALLE LOCK



SPACEFILLER

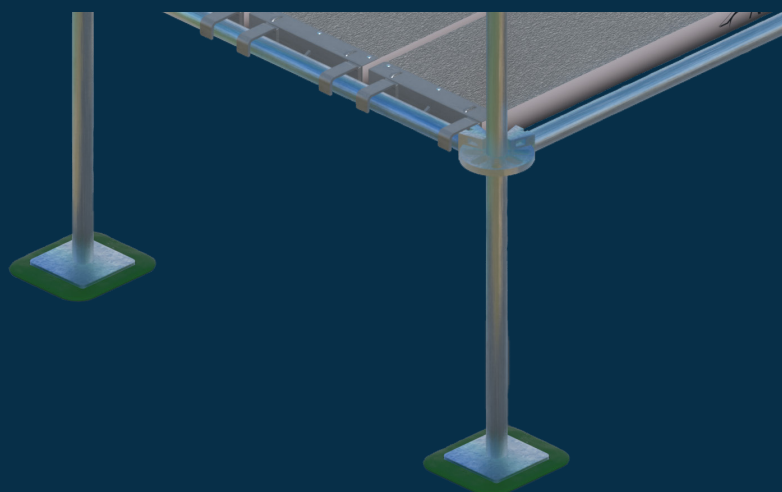
TOEBOARD CLIP

Toeboard clips are required to secure toeboards and are mounted on the scaffolding frame. Toeboard can easily be inserted into the clips. The Toeboard measures 11.6 x 7.4 x 10 cm and weighs 20 g.



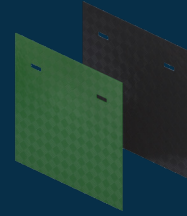
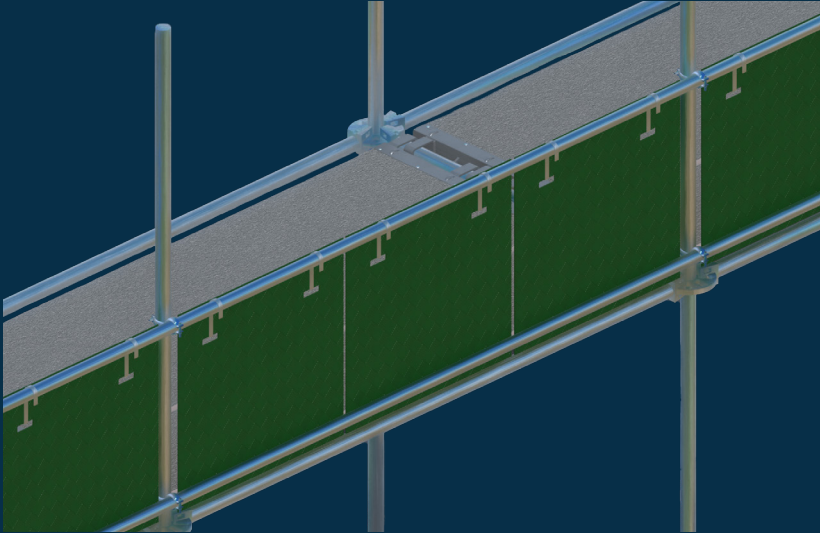
SUPPORT PLATE

The support plates for base jacks are made of heavy duty ocean plastic. With the support plate you avoid damage to the underlying surfaces. The Support Plate measures 20 x 20 cm. and weighs 20 g.



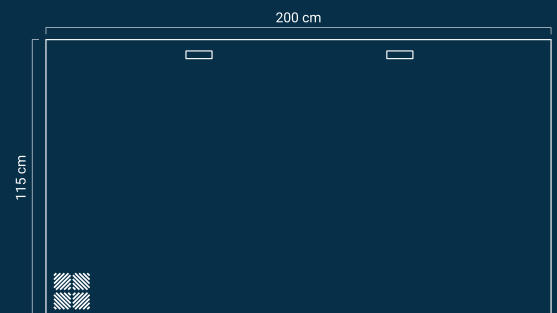
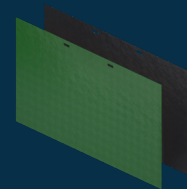
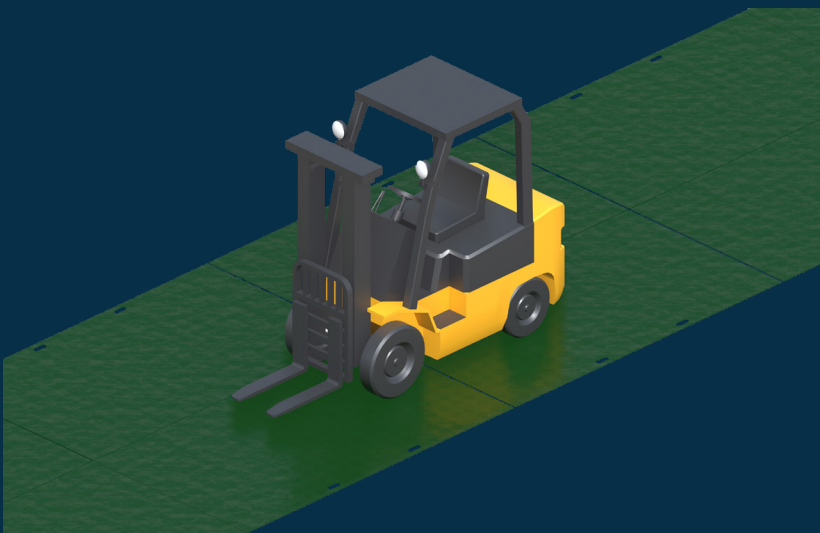
FALL PROTECTION

The Fall Protection is used for shielding on the scaffold during roof work. It measures 110x115 cm. and has a handle. The product weighs 10.5 kg.



MOVING RAMP

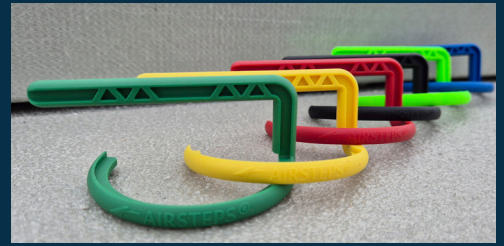
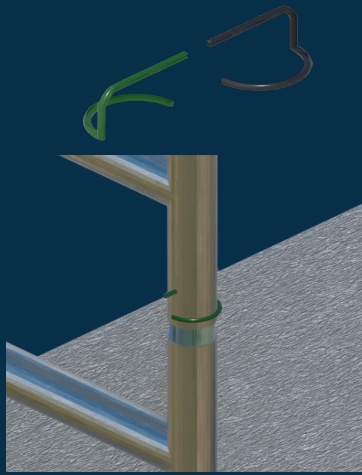
The load-bearing capacity of the Moving Ramp depends on the surface. On a sturdy surface, it can withstand an axle load of up to 20 tons. The mat features two cut-out handles on the sides making it easier for a single person to handle. Size: 200 x 115 cm. Thickness of 1 cm. Standard colour: Black



Tread patten on one side

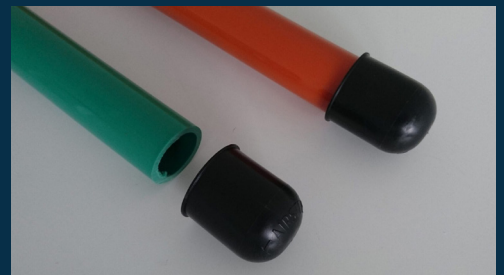
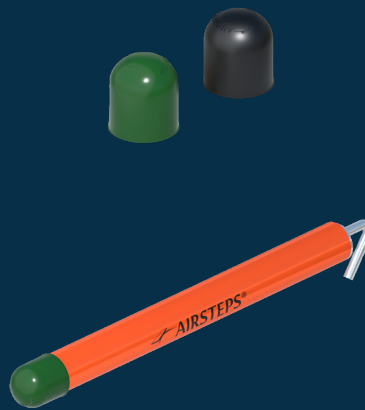
SAFETY CLIP

The Safety Clip is used to lock the beams / frames together. The Safety Clip can mainly be used for rolling scaffold towers. The Safety Clip weight 10 g.



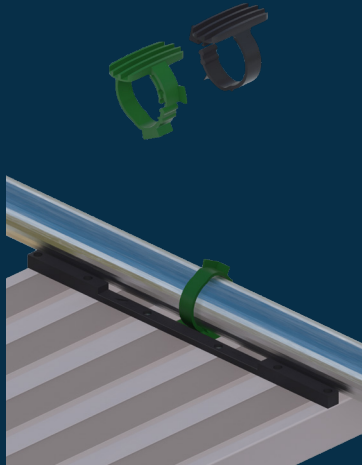
SAFETY CAP

The Safety Cap produced in ocean plastic minimizes the risk of head injuries. It can easily be applied to all Ø48,3 mm pipes.



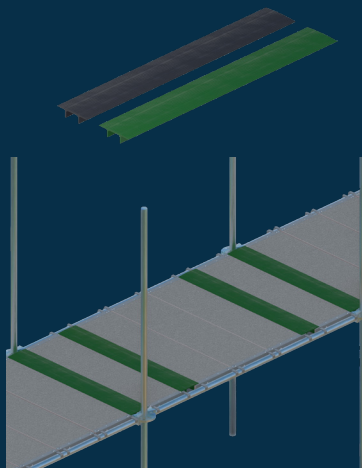
TRALLE LOCK

Our Tralle lock in ocean plastic is approved as storm lock and is being used in connection with our AIRSTEPS Tralle. The Tralle lock weighs approximately 0.03 kg.



SPACEFILLER

The Spacefiller is specially designed to close the gap that occurs between the scaffolding platforms. The weight is only 1 kg. per meter. The spacefiller can be customized by cutting it into the needed lengths with a handsaw.





ESG



ENVIRONMENT

The cornerstone of our sustainability philosophy is the AIRSTEPS composite scaffolding deck, which requires just 1/4 to 1/6 of the energy needed to produce steel or aluminum, with significantly simpler raw material extraction. The deck is recyclable with existing technologies and we are developing partners to re-purpose its fibers and oils into new products. Our accessory components are made from recycled plastic, including materials from recovered fishing nets, which can also be widely recycled.



SOCIAL

We reject all forms of discrimination, bullying, or harassment based on gender, ethnicity, sexuality, or other factors. Everyone shares responsibility for preventing offensive behavior and taking action if boundaries are crossed—whether for themselves or others. We aim to create a culture where addressing inappropriate behavior directly is natural. We prioritize partnerships with companies that share our values on fair treatment, working conditions, and ethical standards, including opposition to child labour.



GOVERNANCE

The company strives to meet all standards of good business ethics, refraining from engaging in activities that could be perceived as cartel formation or price fixing, avoiding the giving of gifts or offering hospitality in contexts that could be considered bribery and respecting the Code of Conduct rules of all business partners.

ENVIRONMENTAL CONDITIONS

1. OPERATION & MAINTENANCE

Cleaning: Like all construction materials, AIRSTEPS must be cleaned and maintained to preserve its value for at least the guaranteed or planned lifespan. The profiles, end pieces and crossbeams are resistant to moderate-strength bases and acids including hydrochloric acid used for cleaning masonry and can therefore be cleaned with most commercially available products. Unlike aluminum, composite materials are resistant to the alkaline substances commonly used in construction processes such as sodium hydroxide.

In cases of severe soiling mechanical cleaning is also necessary and possible provided no cutting tools are used. For high-pressure cleaning the same precautions as for cleaning plywood planks should be followed avoiding high pressure and close proximity to prevent surface damage.

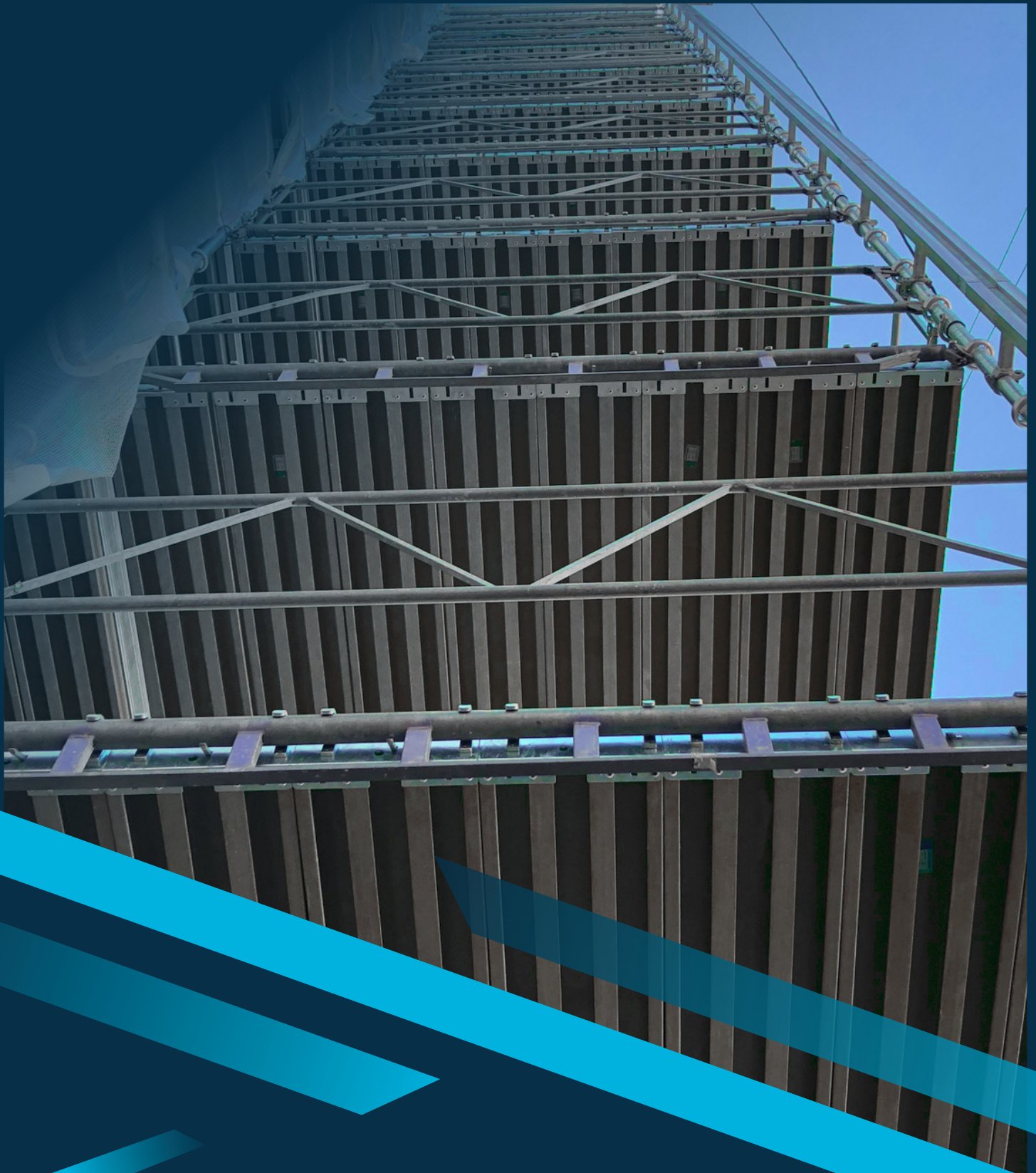
2. DISPOSAL

Incineration – Energy recovery from planks: The profiles contain 35% combustible material by weight providing a significant energy contribution during incineration. However not all incineration plants permit substantial amounts of glass in the ash residue. Since polyester is composed solely of carbon, hydrogen, and oxygen, proper incineration will produce only carbon dioxide and water vapor without releasing environmental toxins.

3. RECYCLING

Composite material is neutral in the sense that it is highly resistant to natural degradation. It is therefore well-suited for reuse—after proper shredding into granulate or as filler material in stable mixtures such as concrete, asphalt blends or as a base layer for road construction alongside other stone and gravel materials. Steel ends are recyclable. Other end pieces and crossbeams in larger quantities can also be recycled as valuable plastic material for a wide range of plastic product manufacturing.





NORDIC PLATFORM

- supporting a better world



Norgesvej 49 | DK-6100 Haderslev
Tel: (+45) 74 53 00 01

info@nordicplatform.dk
www.nordicplatform.com

Tentatively to printing errors, sold-out goods and price changes without notice.
Weight can vary as much as +/-0.5% on all our products. All guarantees are factory warranties.
All prices are excl. VAT and freight from warehouse.