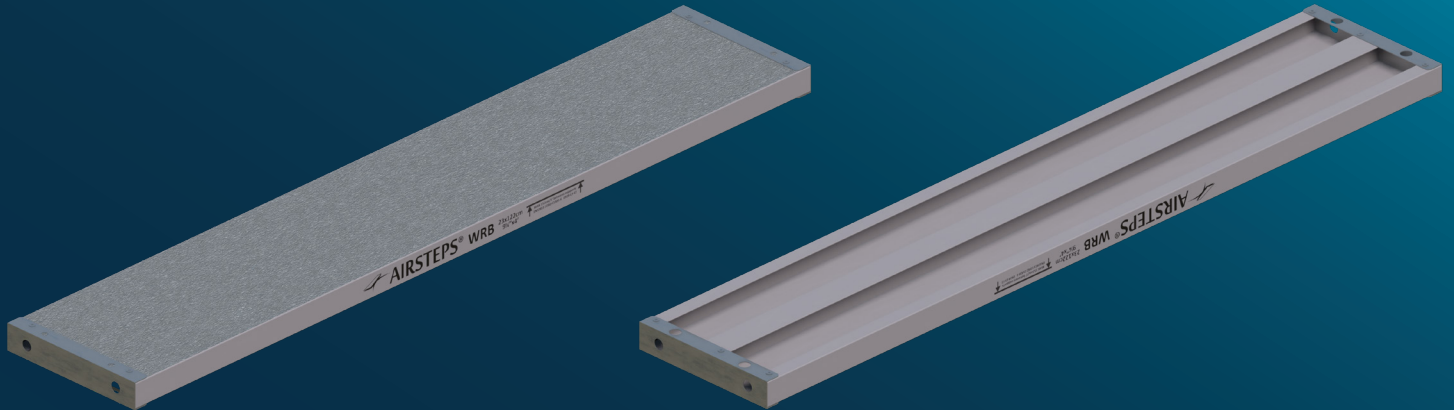


WOOD REPLACEMENT BOARD



In many markets wooden boards are being replaced by other materials, especially in environments with high hygiene, sterility and cleaning requirements.

Length		Width		Wood Weight		Composite Weight*		Weight Reduction
Ft.	Cm.	Ft.	Cm.	Lbs.	Kg	Lbs.	Kg	%
4	122	9 ¼	23.5	15.0	6.8	8.6	3.9	43%
6	183	9 ¼	23.5	22.5	10.2	11.5	5.2	49%
8	244	9 ¼	23.5	30.0	13.6	14.3	6.5	52%
9	274	9 ¼	23.5	33.8	15.2	15.6	7.1	53%
10	305	9 ¼	23.5	37.5	17.0	17	7.7	55%
12	366	9 ¼	23.5	45.0	20.4	19.8	9	56%
16	488	9 ¼	23.5	60.0	27.2	25.4	11.5	58%

*+/-5%

SPECIFICATIONS

- Lighter as wood 43%-58%
- Long-term profitability due to extended durability to wood
- Platform height: 3.7 cm / 1.45 in
- Easy handling on site
- Customized sizes on request
- Your colour and logo

ALLOWABLE LOADS

- OSHA Heavy Duty Rating (75 psf) Span ≤ 5'
- OSHA Medium Duty Rating (50 psf) 5' < Span ≤ 8'
- OSHA Light Duty Rating (25 psf) 8' < Span ≤ 10'

* Boards are intended to be supported with cantilevers at ends in accordance with OSHA 1926 subpart L.

